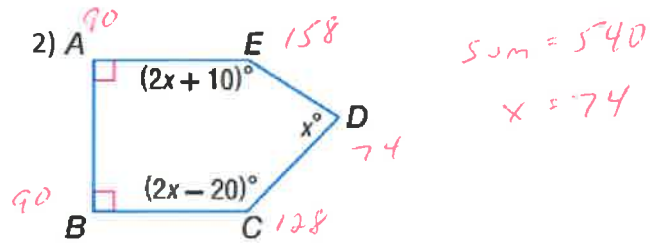
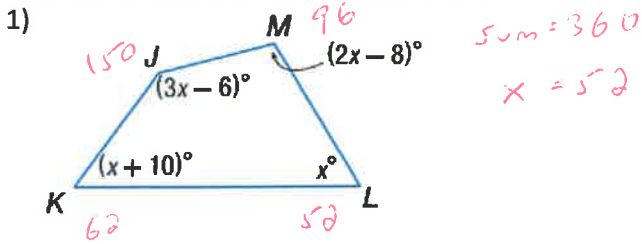
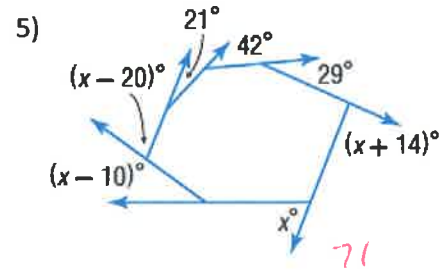
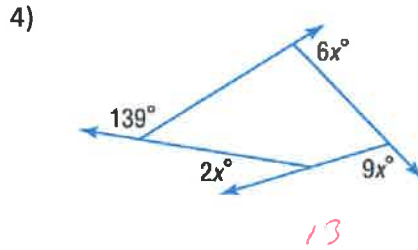
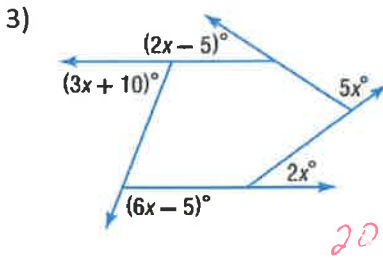


Find the measure of each interior angle.



Find the value of x in the diagram.



Find the sum of the measures of the interior angles for the given polygon.

6) hendecagon

1620

7) 26-gon

4320

8) 46-gon

7920

Find the measure of an exterior angle (rounded to the tenth) for a regular polygon with the given number of sides.

9) 6

60

10) 14-gon

25.7

11) 20-gon

18

Given the exterior angle of a regular polygon, find the number of sides.

12) 45

8

13) 20

18

14) 14.4

25

Find the measure of an interior and an exterior angle of a regular polygon, given the number of sides.

15) 30
int 168
ext 12

16) 14
int 154.3
ext 25.7

17) 16
int 157.5
ext 22.5

Given the measure of an interior angle of a regular polygon, find the number of sides.

18) 176.4

100

19) 165.6

25

20) 135

8