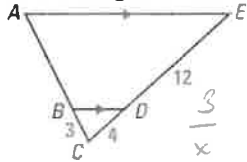
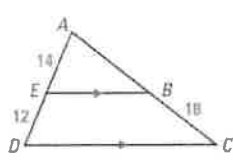
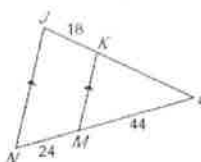


Find the length of \overline{AB} .

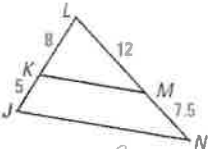
1)  $\frac{3}{x} = \frac{4}{12}$
 $x = 9$

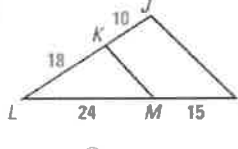
2)  $\frac{14}{12} = \frac{x}{18}$
 $x = 21$
 $12x = 252$

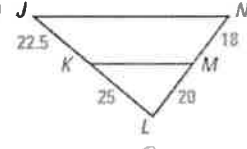
Find the length of \overline{KL} .

3)  $\frac{18}{x} = \frac{24}{44}$
 $x = 33$

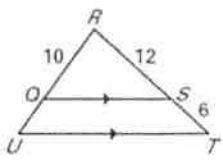
Use the given information and determine whether $\overline{KM} \parallel \overline{JN}$. Show your work.

4)  $\frac{8}{5} = \frac{12}{7.5}$
 $60 = 60$
 Yes

5)  $\frac{10}{18} = \frac{10}{24}$
 $270 = 240$
 No

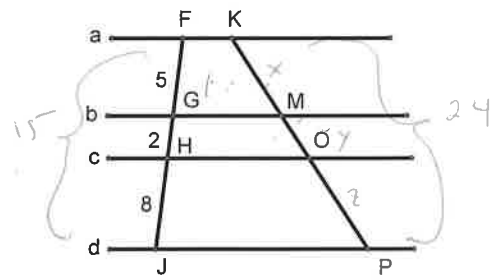
6)  $\frac{22.5}{18} = \frac{25}{20}$
 $450 = 450$ Yes

7) Find the length of \overline{OU} .

 $\frac{10}{15} = \frac{x}{24}$
 $x = 8$

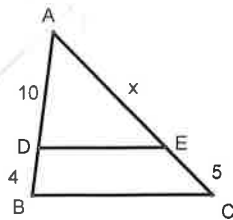
8) Given: $a \parallel b \parallel c \parallel d$ and $KP = 24$

Find: $KM = 8$
 $MO = 3.2$
 $OP = 12.8$

 $\frac{5}{15} = \frac{2}{24}$
 $\frac{8}{15} = \frac{z}{24}$

9) Given: $BC \parallel DE$

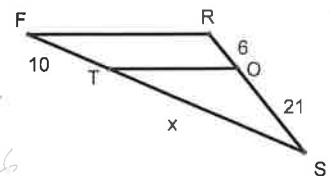
Find: $AE = 12.5$

 $\frac{10}{4} = \frac{x}{12.5}$

10) Given: $TO \parallel FR$

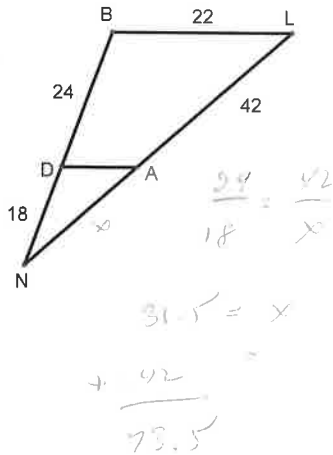
Find: $ST = 35$

$\frac{10}{x} = \frac{6}{21}$

 $\frac{10}{x} = \frac{6}{21}$

11) Given: $DA \parallel BL$

Find: $NL = 73.5$



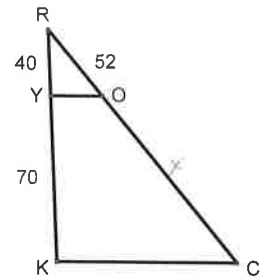
12) Given: $YO \parallel CK$

Find: $RC = 143$

$$\frac{40}{70} = \frac{52}{x}$$

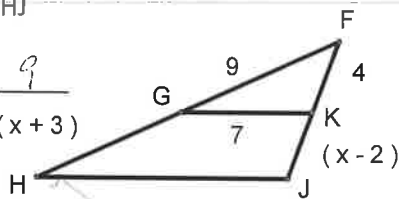
$$91 = x$$

$$+ 52$$



13) Given: $GK \parallel HJ$

Find: $GH = \frac{9}{(x+3)}$



$$\frac{9}{x+3} = \frac{4}{x-2}$$

$$9x - 18 = 4x + 12$$

$$5x = 30 \quad x = 6$$

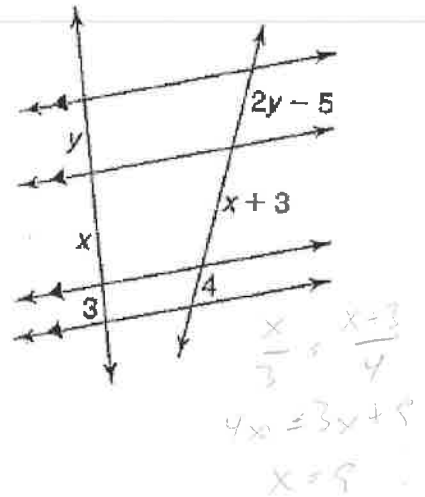
14) Find x and y.

$$\frac{y}{3} = \frac{2y-5}{4}$$

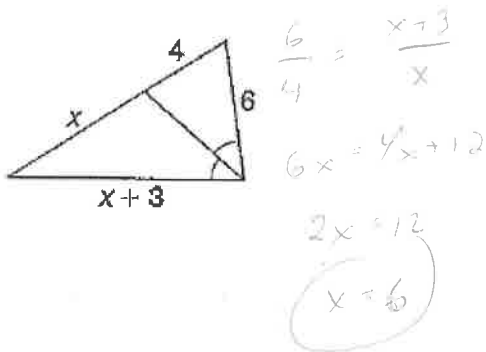
$$4y = 6y - 15$$

$$-2y = -15$$

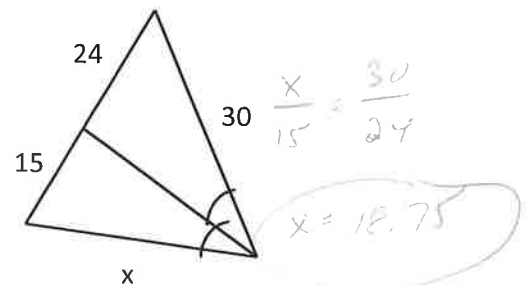
$$y = \frac{15}{2}$$



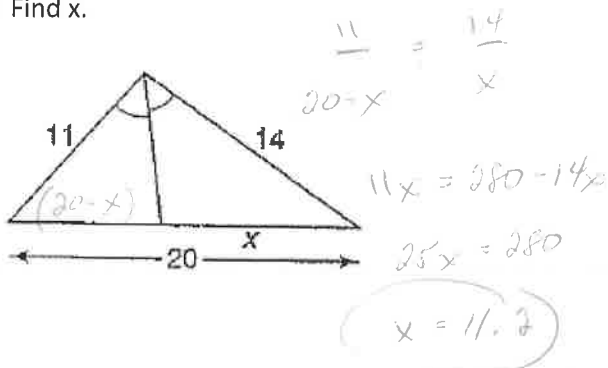
15) Find x.



16) Find x.



17) Find x.



18) Find x.

